

## Petek

Stand-alone Shelving

. This slender bookshelf-called 'honeycomb' in Turkish-uses hexagons to fortify itself. Its body is built from tubes typically used to make automobile fuel lines and welding joints that, unexpectedly, become a source of strength and stability. Although Petek is capable of supporting hundreds of kilograms, the entire library can be lifted with a single finger and, when in use, disappears behind the volumes it holds.





## Salkim

### Bookhanger

. This bookshelf consists of modular units, bent and welded from steel wire, that hang from each other in vertical rows like the clusters of grapes for which it is named. Easily portable and easy to extend, a single column of Salkim can nonetheless bear at least 30kg of books. Inspired by the mobiles of Alexander Calder, its minimal lines disappear behind the books it holds, making it almost invisible when in use and allowing even weighty tomes to appear weightless.





## Sema

Side Table & Magazine Rack

Produced by **Nurus**

. iF Product Design Award 2009

. This minimalist cafe table features a magazine rack built into its base that rotates like dervishes 'whirling' themselves into a trance. While Sema's six magazine bars turn individually, a sleek cut-out in the tabletop allows users to view the titles on each spine.





## Kale

Sofa & Children's Toy

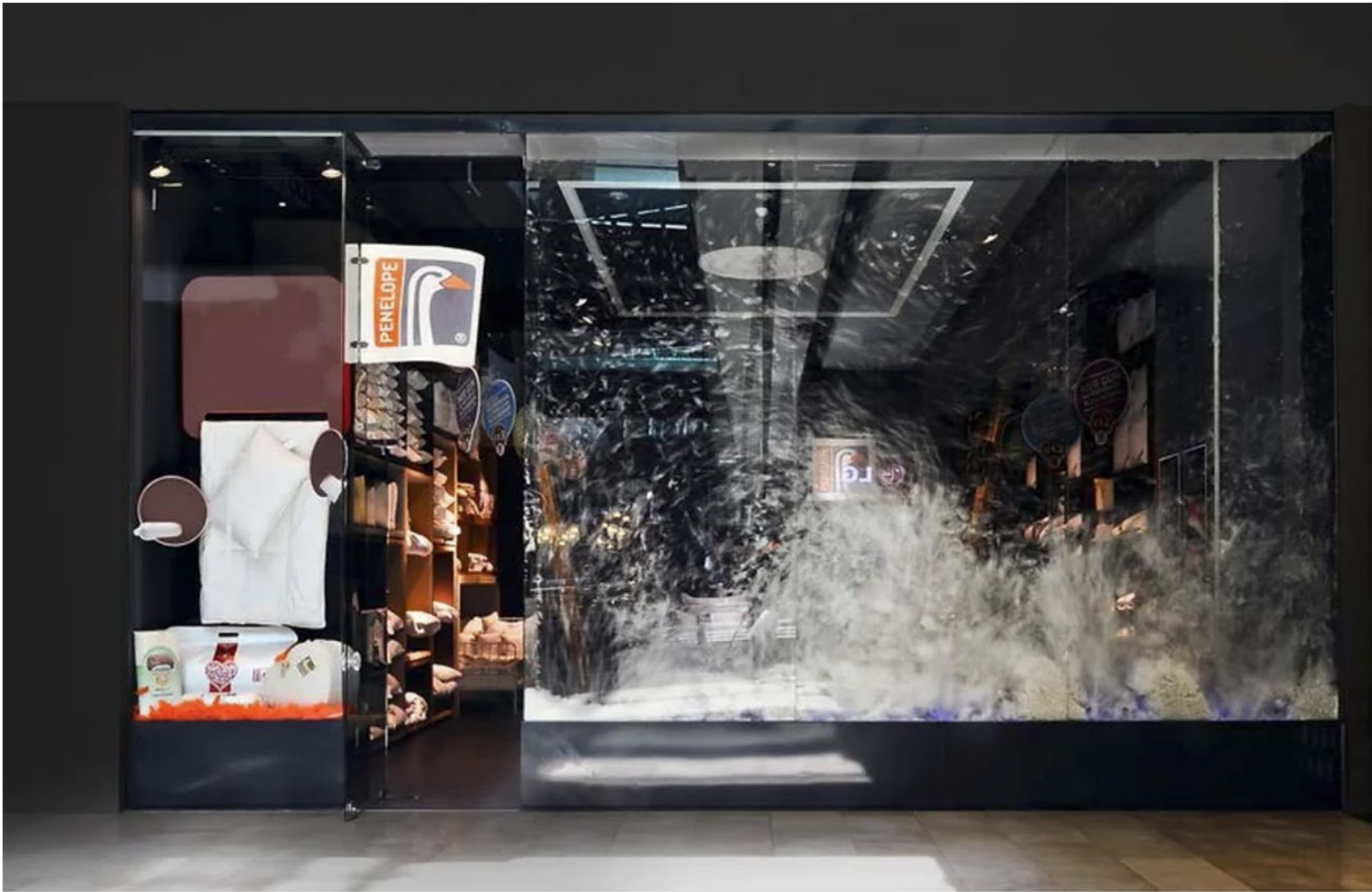
2/6

### Kale [ka-leh]

Sofa & Children's Toy

. Kids love big cushions to play with. Adults want design that is good-looking enough to fit into their lives and their living rooms. Kale is both. An elegant seating solution for the grown-ups, as well as a playground of soft building blocks for children, this sofa is based on the age-old tradition of fort-building. Kale, meaning 'fort' in Turkish, is an oversize toy that doesn't have to be hidden away when playtime is over and a piece of furniture to be enjoyed by the whole family, bringing the generations together.





## Penelope

Retail Store Concept

Istanbul, Turkey

. Designed by [Aparat Design](#)

. For this newcomer to the Turkish bedding retail sector, Boler developed a store template that made retail space feel cozily and handsomely domestic. Displays consisted of simple stacked boxes in various woods and upholstery fabrics, as well as an interactive storefront. Passersby triggered sensors that generated gusting 'snowstorms' of fine down feathers.



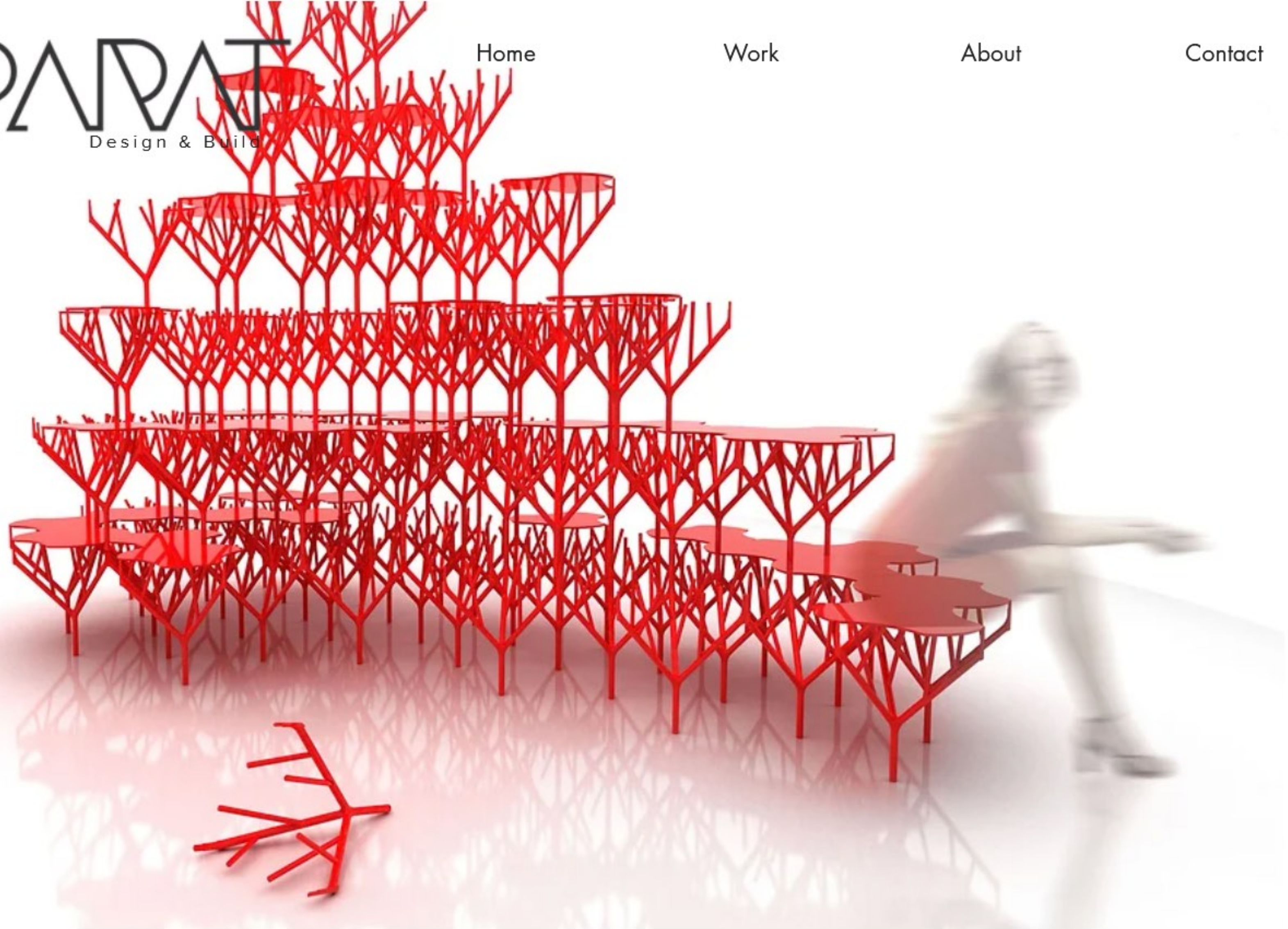


## **Kase** [kah-seh]

Coffee table

. Kase ('bowl'), was originally designed for a doctor's waiting room where patients were offered candy and stacks of magazines on ordinary tables. Kase is an oak table with a spun metal centerpiece that combines these three functions with grace. Nesting bowls at the middle of the table can be used as bowls or centerpieces while also holding magazines around their rims. As multiple magazines unfurl from Kase's center, they resemble the blossoming petals of a flower.





## Tepsi [tep-seh]

Seating & Product Display Tabletops

. A surprisingly simple way to create modular seating and merchandising display, Budak shares the branching structure of a tree but can be joined to other units via its branches. Each modular unit features a single stem that splits into three branches and can be joined with two others by a ring fixture to form the base of a seat or flat surface. Budak needs no tools for assembly, can be disassembled and reassembled in minutes and is a load-bearing powerhouse because any weight it supports is distributed across three units at every level..





## Christofle

Retail Installation

Istanbul, Turkey

. Designed and Built by [Aparat Design](#)

. At the fabled crossroads of East and West, Istanbul is a kaleidoscope of modernity, consisting of particularly diverse cultural influences—mash-ups of language and alphabets, cuisines, fashions, religions and laws—influences that represent extreme opposites; values that are a mirror image of each other. Visitors to the Istanbul Christofle shop interacted with a mechanical kaleidoscope that filled a darkened room, serving as a metaphorical lens through which to view Turkish culture alongside the historical silversmithing traditions of a legendary house of handcraft.





## Tepsi [tep-seh]

Shelving, Partition & Serving Trays

. Tepsi, which means 'tray' in Turkish, untethers users from static, single-purpose furniture. This sculptural shelving unit laser-cut from compact laminate consists of two parallel panels of contrasting color that can be wall-mounted or stand alone as a room partition to perform multiple functions. The backboards provide slots for discrete shelves of varying dimensions and shapes, thermoformed from LG Hi-Macs acrylic. These trays can be moved to different locations in the panels to serve as storage and display or even removed for use as serving trays.





## Nef

### Video Gaming Room

Istanbul, Turkey

. Designed by [Aparat Design](#)

. This video gaming room designed for Istanbul developer Nef's 163 residential tower synthesizes three concepts: bleachers—tiered benches that can be pulled out while in use and nested for storage—where spectators gather to watch sports matches; the Victorian gentleman's library, an escape from the banal world through intellect and imagination, often symbolized by the tufted leather Chesterfield sofa; and, finally, the padded walls of an insane asylum. With the benches closed and nested into a roomwide sofa, the space converts to use for more athletic games like Wii or Xbox, while pulled outwards to varying degrees, they form long divans at different heights on which players may sit and guests may lounge.